



# Community Connect

ISSUE 12

JUNE 2021

HELPING TO  
CONNECT CHURCH  
AND COMMUNITY  
GROUPS  
TOGETHER  
FOR THE  
WELLBEING  
OF ALL

## INSIDE THIS ISSUE:

- 1 Revd Mandy writes
- 2 Service Rota
- 2 A Great Day Out
- 3 The Royal British Legion
- 4 Roly Polys
- 4 First Baptism
- 5 A Message from Rev'd Heather
- 6 Flower Word Search
- 7 The Food Bank
- 8 Affinity Daycare
- 9 Ice Houses
- 10 DPC Connect
- 11 A Walk around...
- 12 Wellbeing PopUp
- 13 Further Info

## Rev'd Mandy writes...

With lockdown continuing to ease many people are turning their thoughts to getting away, days out, holidays. One of the most famous holiday and day trip destinations in England is Blackpool.

Have you ever been there? Perhaps seen the lights, or been scared half to death on the rides, or walked along the pier, or seen the famous ballroom? Or maybe you have just had a bite of Blackpool rock?

If so, did you notice that the word Blackpool runs right through a stick of Blackpool rock? From the beginning to a very sticky end.

In the very first book of the Bible in Genesis, it says that God made human beings in His own image. If that is so, then we must have something of God in us, God's DNA imprinted in us. Wow, just like a stick of Blackpool rock God's name is written in us. I find that amazing!!

The problem is because we are human and prone to forgetting God, in whose image we are made, we sometimes live our lives in a way that denies our creator



and we end up not reaching our full potential and indeed we actually can distort God's image within us and instead of revealing the Glory of God within us we obscure Him.

When we ignore God and go our own way instead of following our Maker's instructions, the Bible calls that sin.

And sin causes a blockage in that very important relationship with our Creator God.

But, and here is Good News, God sent Jesus to deal with our sin so that we can have that relationship with God restored and Christians believe that if we recognise

those times when we have decided that our way is better than God's way, and we acknowledge that before Jesus, then our sin is removed and we are restored once again revealing God's Glory within.

And if we follow the way of Jesus, God's Son, then God's glory is revealed more and more.

So, just like a label on your clothing tells you the maker and gives you instructions for care of your garment, remember that we all have an inner label marked 'Made by God'. Let's know who our maker is and let's reveal his love, glory, forgiveness and peace to those around us.

## WELLBEING CAFÉ PICNIC

Have you missed the weekly Wellbeing Café at St Francis? Don't worry we are planning to re-open in the coming months but until then, why not join us for our .....

WELLBEING CAFÉ PICNIC at Errington Park Duston on WEDNESDAY 16TH JUNE from 12 NOON -2PM. (Weather permitting). We would love to see you. Bring a picnic & a chair!

# Service Rota June / July

**Services in Duston and Upton Parish**  
**All services are at 10am**

Thursday 3rd June St Luke's	Sunday 4th July St Luke's
Sunday 6th June St Luke's	Tuesday 6th July St Francis'
Tuesday 8th June St Francis'	Sunday 11th July St Francis'
Sunday 13th June St Francis'	Thursday 15th July St Luke's
Thursday 17th June St Luke's	Sunday 18th July St Luke's
Sunday 20th June St Luke's	Tuesday 20th July St Francis'
Tuesday 22nd June St Francis'	Sunday 25th July St Francis'
Sunday 27th June St Francis'	Thursday 29th July St Luke's
Thursday 1st July St Luke's	

## VOLUNTEERS NEEDED!

Since lockdown our garden areas around St Francis' Church need a bit of tender loving care.

If you feel you can help with a bit of pruning and general maintenance, please contact our Church wardens Rob Tavener on **07772 691829** or Ian Hanlon on **01604 757157**.

Thank you!

Also, we are planning another Parish Sale in June. This time it will be in the area outside St Francis' Church. Date to be announced.

## A great day out discovering England's churches

**Ride and Stride** - the foremost annual fun **fund-raising** event to help preserve churches and chapels and keep them active in our communities.

Date for your diary – Ride and Stride 2021 will be held on **Saturday 11th September**

Ride & Stride is a sponsored event for cyclists, joggers, walkers and horse riders. Any mode of transport can be used as long as sponsors are happy; a couple of people have used vintage cars!

Money raised helps **Northamptonshire Historic Churches Trust** to continue supporting our marvellous churches across the county with essential repairs and improvements. **Ride and Stride** is an opportunity to raise money not only for the Trust but for your own church, as we return 50% of the money to the church of your choice.

Some participants challenge themselves to visit as many churches as they can by their chosen mode of transport. Others prefer a more leisurely approach, visiting fewer churches and taking more time at each. There is no age limit - it is a great family activity – and you plan your own route. Churches are usually open from 10.00am to 6.00pm although there are some that close earlier.

For more information about Ride and Stride do contact one of the County Organisers:

Val Hartley:  
 richardvalhartley@btinternet.com  
 Liz Doherty:  
 07713396130 emdoherty@sky.com

For information about events around the rest of the country please visit the national website at:  
[www.rideandstrideuk.org](http://www.rideandstrideuk.org)

Registered as a Charity - No: 1021632



Please consider whether you would like to take part this year. We also need volunteers to welcome participants at St Luke's and St Francis churches and sign their form. Please let Revd Mandy know if you would like to take a turn on the 11th September to be a welcomer.

Thank you.

**This year marks the centenary of the Royal British Legion. But why was there a need for this particular charity?**

After the First World War, Britain's economy plummeted, leaving 2 million people unemployed in 1921. Over 6 million men had served in the war. Of those who came back, 1.75 million had suffered some kind of disability and half of these were permanently disabled.

On 15 May 1921 The British Legion is formed, bringing together four national organisations of ex-Servicemen that had established themselves to support those who had suffered as a result of service during the First World War.

The Women's Section of the British Legion is swiftly established. Madame E. Guérin was born in Ardeche France and was the originator of the Remembrance Poppy Day. Her idea was for all World War I Allied countries to use artificial poppies, made by French widows and orphans, as an emblem for remembering those who gave their lives during the World War I and, at the same time, creating a method of raising funds to support the families of the fallen and those who had survived, thereafter.



© Darrin Stevens 2021

In September 1921 Anna Guérin persuades the Legion to adopt the Poppy as a symbol of Remembrance. That same year the first Poppy Appeal raises £106,000 (£5.21m in 2021) and 2,500 branches of the British Legion are established across the country. The following year the Legion's Poppy Factory opens in the Old Kent Road, London where 40 disabled men manufacture 1,000 poppies a week.



The first Festival of Remembrance is held at the Royal Albert Hall in 1927, with the first Field of Remembrance appearing on the lawns outside Westminster Abbey in London a year later.

On 15th May this year our own Duston and

District branch of the RBL held its own centenary service (in the rain)! Here is one of the prayers read at the service.



© Darrin Stevens 2021

*Heavenly Father, we thank you for the Royal British Legion as it marks its centenary year.*

*Your Son Jesus commands us to love our neighbour and we thank you that love is demonstrated in many ways through the work of the Royal British Legion.*

*Thank you Father God that You have put into the hearts of members to join*

*together in the fellowship of The Royal British Legion in this county and to desire to carry out its aims and purposes; Let Your Fatherly hand ever be over them, let Your Holy Spirit ever be with them, and so guide their meetings and their endeavours that Your Kingdom of love and Peace may be advanced. We ask this through Jesus Christ our Lord and Saviour. Amen.*

Also on the day a bench was dedicated in recognition of the RBL centenary year, and in memory of the late Maureen Basford, a member of Duston and District Branch of the RBL, and a member of the St Luke's Churchyard team.

We hope you will visit St Luke's Churchyard and sit awhile and enjoy the peace and beauty and remember those who have served their communities and their country with dedication and love.



© Darrin Stevens 2021

**Contact us for more info;**

Branch mob: 07464 333509

Email: [hello@dustonrbl.co.uk](mailto:hello@dustonrbl.co.uk)

Email: Membership.  
[secretary@dustonrbl.co.uk](mailto:secretary@dustonrbl.co.uk)

Visit facebook: <https://www.facebook.com/dustonrbl>



## THE GOSPEL ACCORDING TO THE ROLYPOLYS



For all owners of fur and feather babies, past and present

### Chapter 3

We promised to tell you how the Rainbow Bridge came about. It was like this

The Maker made everything: the earth sky land and sea, plants and trees, all living creatures and humans and everything was perfect and lovely. Unfortunately, one creature wanted to be better than any other. It was the Black Dog who changed into a serpent and like a disease started to turn people away from the Maker. All of a sudden the world wasn't perfect anymore and it became a hard place for all creatures to live. The Maker still loved the whole of his creation but it was broken and needed mending and humans were the most broken of all

and they were the ones who should have known better because they were supposed to care for all the things the Maker had made.

He found one man with a family who really did care. His name was Noah. The Maker said to Noah "This has to end. I will save you, all the creatures I have created and any humans who will still listen to what I have to say. Build an enormous boat, fill it with two of every creature you can find and tell the other humans that if they want to be safe they must join you because I am going to wash all the nastiness that has come from the Black Dog out of the world."

And that's what he did. Noah and his family along with our fur and feather ancestors were saved. When it was over the Maker was very, very, sad and promised that such a terrible flood would never happen again, and put a rainbow bridge in the sky to seal the promise. What he didn't tell Noah but told our ancestors was that we fur and feather babies would always be able to escape this world and find our way back to him by crossing that Rainbow Bridge.

God had sent Noah to be our saviour, but it seemed much more drastic action would be needed before all human beings could be saved.....!

## First Baptism at St Luke's Church



**May saw our first Baptism at St Luke's Church as lockdown measures ease!**

We were delighted to baptise Bethany Anne Grundy on Sunday 16th May and pray that she will grow to know, love and serve God as she grows in her faith.

You are never too young or too old to be baptised! If you are considering it for yourself or a member of your family, please contact Revd Mandy on 07898 364827.

## A message from Rev'd Heather...

*John 14:23-29*

*Jesus said, "If anyone loves me, he will obey my teaching. My Father will love him, and we will come to him and make our home with him. He who does not love me will not obey my teaching. These words you hear are not my own; they belong to the Father who sent me.*

*"All this I have spoken while still with you. But the Counsellor, the Holy Spirit, whom the Father will send in my name, will teach you all things and will remind you of everything I have said to you. Peace I leave with you; my peace I give you. I do not give to you as the world gives. Do not let your hearts be troubled and do not be afraid.*

*"You heard me say, 'I am going away and I am coming back to you.' If you loved me, you would be glad that I am going to the Father, for the Father is greater than I. I have told you now before it happens, so that when it does happen you will believe."*

I'm sure we can all think of occasions when we have wished we could see into the future. Usually this happens at key points in our lives when choices need to be made and we don't want to make the wrong decision. Changing to a new job, committing to a relationship, moving house, emigrating, or just sitting in a doctor's surgery waiting for a diagnosis.

What will the future bring? How will the decisions I make now affect the outcome? And more importantly how will it impact on those around me? Friends, family and work colleagues. We've all been there, and although in retrospect we might change a lot of things as we look back over our lives there are also things that we are perhaps glad that we did not know about in advance of them happening.

But I'm sure there have been occasions when we have all felt the need to forewarn or prepare those around us for something that we know or strongly suspect is going to happen to us. Usually we do this because we care for them and we want to break the news gently, preparing them for what is to come.

It's that sort of brotherly, friendly love that we have for one another. Someone means so much to us that we want to

spare their pain, take it upon ourselves or at least help them to deal with it.

Jesus has the same sort of love for his friends and he tells them so. But he goes further. He tells them it is the same sort of love that he has for God the Father, the same love and words of love that God has for each and every one of us, and that they both want to share with us. The sort of love that brings peace to the troubled and frightened heart. Jesus assures them that although he is going away they need not feel abandoned for this shared love they experience will remain, not in the form of the physical Jesus but in a new form, that of the Holy Spirit. What is more, if they truly love him, Jesus, and their fellow disciples they should be glad that he is going to be with the Father and accept the Holy Spirit as their teacher and counsellor.

To use an analogy most youngsters will identify with the end of term has come, and it's time to move up a class. Do not let your hearts be troubled and do not be afraid. Twelve words of reassurance that are easy to remember and that we can all call on in times of uncertainty or distress.



MAY GOD KEEP YOU IN ALL YOUR DAYS.  
 MAY CHRIST SHIELD YOU IN ALL YOUR WAYS.  
 MAY THE SPIRIT BRING YOU HEALING AND PEACE.  
 MAY GOD THE HOLY TRINITY DRIVE ALL DARKNESS FROM YOU  
 AND POUR UPON YOU BLESSING AND LIGHT.

AMEN

# WORD SEARCH

Can you find all the flowers in the puzzle below?



## Flower Garden

E	N	E	N	P	D	A	R	H	I	F	A	I	O
G	O	N	P	E	A	Z	A	O	M	O	H	A	A
D	G	T	A	O	I	A	S	N	U	X	K	H	A
H	A	O	N	N	S	L	U	E	M	G	L	O	Y
I	R	M	S	Y	Y	E	C	Y	E	L	L	S	A
R	D	A	Y	C	B	A	O	S	H	O	I	N	L
E	P	G	I	C	E	M	R	U	T	V	D	O	I
T	A	R	R	L	G	U	C	C	N	E	O	W	L
S	N	E	A	I	O	R	H	K	A	A	F	D	L
A	S	B	G	R	N	I	A	L	S	I	F	R	Y
G	E	R	A	N	I	U	M	E	Y	L	A	O	D
D	I	I	L	O	A	E	S	O	R	H	D	P	E
N	D	A	I	N	U	T	E	P	H	A	A	N	A
S	O	A	L	L	I	U	M	C	C	D	D	D	A

HONEYSUCKLE  
CHRYSANTHEMUM  
GERANIUM  
AZALEA  
BERGAMOT  
SNAPDRAGON  
CROCUS  
FOXGLOVE  
ASTER  
LILLY  
DAFFODILL  
SNOWDROP  
BEGONIA  
PANSY  
ALLIUM  
PEONY  
PETUNIA  
ROSE  
DAISY  
DAHLIA

Play this puzzle online at : <https://thewordsearch.com/puzzle/314946/>

# The FOOD BANK Needs you!

**We just want to say a huge 'Thank you' for your donations!**

**Keep them coming.**

Duston United Reformed Church works with Re:store to offer a food bank.

Situated opposite the Bakery in Main Road Duston, we are open on Saturday mornings from 10.00 until noon to provide ready packed groceries, we also have household products, personal hygiene items, nappies/wipes, baby food and a treats box from which you may chose additional items.

PLEASE if you need some help, come and see us. You will be assured of a confidential, warm and friendly welcome. If you know of anyone who could

do with a helping hand, please tell them about us. During the current pandemic, we follow COVID guidelines, please wear a mask. One person at a time, unless you have children with you, in which case you may bring them in with you. A one way system is in place.

Donations may be brought to Church on Saturday and Monday mornings between 10 and noon.

**Thank you so much.**

**FOOD BANK**  
NORTHAMPTON



**Remember  
YOU may also  
need the Food  
Bank!**

## Top 5 Items to donate this month

**All in date please...**

- ◆ Small jars of coffee
- ◆ Plate Pie (ie Fray Bentos or like)
- ◆ Self bake bread rolls
- ◆ Tinned Fruit & rice Pudding
- ◆ Tinned Spaghetti



The good news is that donations can now be dropped off at St Luke's and St Francis' churches on the days when there are services.

See service rota in this

newsletter. Or drop them at the Rectory 3 Main Road Duston or **call Revd Mandy On 07898 364827** if you would like Suzi or Liz to pick up donations from your home.

**Thank you.**

## Donations

St Luke's & St Francis' churches (on days when there are services)

St Luke's Rectory – 3 Main Road

Liz & Suzi can Pick up on their walks





# AFFINITY DAY CARE in Duston

Are you looking after a loved one at home? Fern Overton talks about a carer's coffee morning....

We run a carers coffee morning every Tuesday in the foyer of St Luke's Community Centre Duston. It's free of charge and it's just an opportunity for carers to sit and chat with each other.

We provide tea, coffee and home made cakes or biscuits and are able to offer an hours respite care for anyone wanting to attend.

### What do we do?

We provide day care for people in later life. We do this in a caring, safe environment where our clients join us for care, for friendship and for fun.

Some are physically frail. Some live with dementia. Whatever their age or state of health, we treat them with dignity and respect. Our clients are our friends.

Find out more about Affinity Daycare

01604 372744

info@affinitydaycare.co.uk

We'd love to hear from you!



**Paul's Handy Van**  
 safety | repairs | maintenance  
 M: 07443 874 754  
 e: pboorhv@gmail.com

30 years of experience

- Decorating
- Furniture assembly  
Picture hanging
- Carpentry  
Small building work
- Handrails  
Ramps
- Furniture assembly  
Picture hanging
- Outside maintenance  
Steps / Ramps
- Home safety inspection

QUALIFIED:  
 • Trusted Assessor  
 • Mental Health First Aider

ENDORSED BY  
 THE ROYAL BRITISH LEGION  
 Duston & District Branch



Sharing an article from Duston Local History Society.....

## ICE HOUSES - BARBARA LUKE.

In the 17th century no country house estate would have been without an icehouse to store ice for preserving perishable food or providing ice for drinks or cold desserts. The early English ice houses were copied from examples seen by European travellers and some of the first ones were in London.

Icehouses were located partially or wholly underground lined with bricks, and built near a source of water, a spring, a stream or a shallow lake or pool. Often sited near to the kitchens but usually in a small spinney or area of woodland to provide some shelter. There would be a drain hole at the bottom of the ice pit to allow melting water to drain away.

On cold winter mornings at first light a junior outdoor servant would hack frozen lumps of ice from the water source and cart them to the icehouse where they would be layered between straw and sawdust. This insulated the ice and kept it frozen for, it is said, up to 18 months.

When no longer needed for ice storage they were often put to a different use; either for general storage or during WWII some became air raid shelters. Falling into decline many became derelict and covered in vegetation.

Northamptonshire with its many fine houses of course had icehouses. These old maps show their positions. I wonder how many are left? I know of one at Blatherwycke, 6 miles

north-east of Corby, Northamptonshire, unique in that it survived when the grand house didn't.\* Althorp House has an icehouse at the ice plantation which has been sealed off as it was considered to be dangerous.

\*Ice House Approximately 20 Metres North East of Church of the Holy Trinity. A Grade II Listed Building in Blatherwycke, Northamptonshire.



Woodlands Park Ice House, Acton

# LET'S CELEBRATE DUSTON !

## 30 DAYS OF CELEBRATING OUR VILLAGE

### CHECK OUT OUR WEBSITE AND FACEBOOK FOR A NEW FEATURE EVERY DAY THROUGHOUT JUNE

**SUPPORT LOCAL ✦ DISCOVER DUSTON'S HISTORY ✦ VISIT OUR PARKS ✦ JOIN A NEW GROUP ✦ & MUCH MORE**



[www.duston-pc.gov.uk/letscelebrateduston](http://www.duston-pc.gov.uk/letscelebrateduston)

 **Duston PC**

 **events@duston-pc.gov.uk**

*DPC supporting residents for 30 years 1991 - 2021*



DUSTON PARISH COUNCIL

More info on our Facebook  
and Website or contact us by  
phone if you are not online.

01604 583626

events@duston-pc.gov.uk

www.duston-pc.gov.uk

## DUSTON PARISH COUNCIL: Connect with us

Have you all had enough of the rain yet? Well we are looking forward to a flaming June and we have lots to tempt you outdoors. Here's how you can connect with us and each other during the month of June.

### LET'S CELEBRATE DUSTON 1-30 JUNE

During June, we will be celebrating all things Duston; featuring our shops, businesses, churches, parks, clubs, groups, organisations - you name it we will be giving it a shout out. We will be doing daily posts on our Facebook page and you can find a calendar of features on the What's On and Let's Celebrate Duston pages on our website

[www.duston-pc.gov.uk/letscelebrateduston.html](http://www.duston-pc.gov.uk/letscelebrateduston.html)

### THE GROW TOGETHER ALLOTMENT – 3 JUNE | 23 JUNE | 24 JUNE

3 opportunities this month to join us as we celebrate volunteer week with a 10am – 4pm session on 3rd. From 6-10pm on 23rd join us for some Midsummer gardening with refreshments and back to our regular 10am – 2pm session of weeding & planting on 24th. All ages and abilities welcome. You choose for how long. Fresh air, friendship and fun. Social distancing rules apply. Call to register so that we can let you in.

[jenny@cypn.org](mailto:jenny@cypn.org) or call 01604 583626

### VIRTUAL WELLBEING TALK – IBS AND DISORDER AWARENESS THURS 17th JUNE 6-7PM

DPC and St Luke's PPG welcome you to our next health talk via Zoom. We are delighted to welcome Dr Iqbal Khan, Consultant Gastroenterologist & Endoscopy Lead at BMI Three Shires who will talk about aspects of this common condition. This presentation will be on Microsoft Teams. Please note this is an evening talk. Pre-submit questions to [bcdm@duston-pc.gov.uk](mailto:bcdm@duston-pc.gov.uk) More info & register your FREE place at <https://ibs-ibd.eventbrite.co.uk>

### LOCAL COMMUNITY SUPPORT

Did you know we have a directory on our website where you can find out what and who is in the village; from yoga classes to churches, estate agents to opticians and so much more. We are currently updating it and have been in contact with over 150 local businesses, churches, shops etc. There is still time to get your form back to us and do let us know if you are part of something that should feature and we will do our best to include you.. Contact Sarah at: [events@duston-pc.gov.uk](mailto:events@duston-pc.gov.uk) <https://www.duston-pc.gov.uk/findmynearest.html>

### DUSTON FUN DAY

Though there is light at the end of the tunnel, things remain a little uncertain until the government announcement later this month. After much deliberation, it is with sadness that we have decided not to go ahead with the Duston Fun Day on 27th in its usual format. We would rather look forward to a bigger and better event for 2022 than risk last minute disruption. Instead we will be running a series of pop up events; current ideas include a Garage Sale Trail, Treasure Hunt, Photography Competition and a Picnic in the Park. We'd love to hear your ideas too. There are still lots of ways you can connect with us and each other over the summer. Volunteering and getting involved locally has huge health and wellbeing benefits and keeps us all connected to the community we live in, so do join us.

There is lots more info on our Facebook@DustonPC and our website or you can contact us by phone if you are not online.

01604 583626

events@duston-pc.gov.uk

www.duston-pc.gov.uk

**DUSTON FUN  
DAY 2022**

**WE'LL BE BACK!**

# A walk around... Berrywood and St Crispin's.

**Rob Tavener**

Now, before you all switch off because you don't want walk around a housing estate, bear with me, as there is much to see...

Starting at the edge of Duston, just opposite the bus stop in Berrywood road, take the path that runs south, down the side of the estate. Approaching the first large tree, step through the hedge.



**Panoramic view across Nene Valley**

The "panoramic" view across the Nene Valley on a sunny day is breathtaking, with Rothersthorpe on the left, Kisingbury and Bugbrooke, central, right around to Harpole and beyond.

Continue to admire the view for a while, then follow the path down to its end, with a junction left or right, or, alternatively, walk across towards the Hospital and take the old path which runs from Berrywood down towards Upton. The bushes either side of this alternative path present a secluded tunnel to walk through, which in March comes alive as the bushes blossom, it really looks enchanting...



At the junction, turning left, continue on the path which runs around the rear of the Residential home. The field which used to adjoin the Cricket Club had lain fallow for many years, until the last few, when it has become a lively set of allotments with the owners producing splendid mini gardens, almost as you would see at a grand Flower Show... whilst the old clock tower watches over them all.



Heading on, passing St Luke's Primary, enter the small copse. As spring emerges into summer this delightful area turns blue with large patches of bluebells along with celandines, wood anemones, willow catkins and much more..



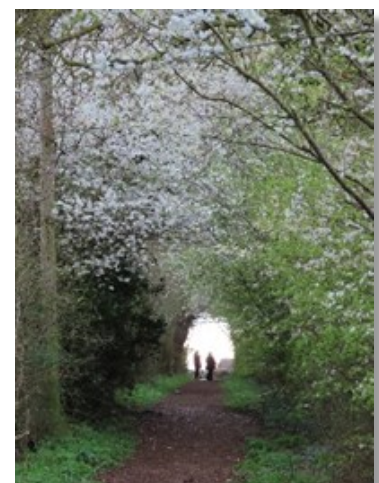
Emerging from the copse, turning left, head for the Playing fields. This large expanse of grassland is often full of activity at the weekend, with, football and other activities as well. During the last good snowfall, more than a dozen snowmen appeared.....

Crossing to the far corner, the lovely, former St Crispin's Hospital Chapel shelters in the trees...

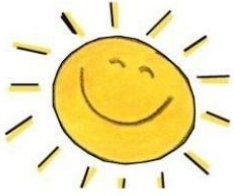
Past the church and into Berrywood itself, here again we can see bluebells in flower in April, and even daffodils along the side of the road, left by the former occupants of the grounds.

Finally, we emerge from the woods and pick up the old trail which leads back up to Berrywood road.

Houses??? Oh yes, there were a few, but with so much to see, I hardly noticed them.....!!!







PLEASE JOIN US for our next  
**VIRTUAL HEALTH &  
WELLBEING POP UP**

Thursday 17th JUNE 2021 | 6pm - 7pm

**'Irritable Bowel Syndrome and  
Irritable Bowel Disorder Awareness'**

by **Dr Iqbal Khan**

*CONSULTANT GASTROENTEROLOGIST & ENDOSCOPY LEAD  
at BMI Three Shires*

A FREE, informative presentation giving help and advice

Hosted via  
**Microsoft Teams**

Pre submit any questions  
to **bcdm@duston-  
pc.gov.uk**

For more info and to register, go to  
<https://ibs-ibd.eventbrite.co.uk>

***Duston Parish Council working in partnership with St Luke's PPG***



**T: 01604 583626  
E: bcdm@duston-pc.gov.uk  
[www.duston-pc.gov.uk](http://www.duston-pc.gov.uk)**





## Community Connect

The Rectory  
3 Main Road  
Duston  
NN5 6JB

Email: [aj.marriott123@gmail.com](mailto:aj.marriott123@gmail.com)

## Helping to connect Church and Community groups together for the wellbeing of all

We aim to get Community Connect out by the first week of each month, so articles for the following month need to be submitted by the beginning of the last week of each month. They can be emailed to Rev'd Mandy Marriott at [aj.marriott123@gmail.com](mailto:aj.marriott123@gmail.com) or put through the Rectory door 3 Main Road Duston NN5 6JB.

This is your community newsletter so keep your articles coming in.

We love to hear from you.

*We currently don't charge for Community Connect but if you would like to make a donation towards printing costs then we would be very grateful. Donations can be made by cheque to Duston and Upton PCC or by BACS transfer to Duston and Upton PCC Acc number 32599613 Sort Code 23-05-80. **Thank you.***

# In your next issue of Community Connect...

Next month – It's wedding season! Celebrating with those getting married.

Look out for the Poppy Walk in Upton.

Further news as lockdown eases.

If you are part of a local Community Group, or share a hobby with others perhaps through sport, music, art, etc, we would love to hear about it. So do let us have your news. Thank you.

All contributions to Community Connect to Revd Mandy on [aj.marriott123@gmail.com](mailto:aj.marriott123@gmail.com)

